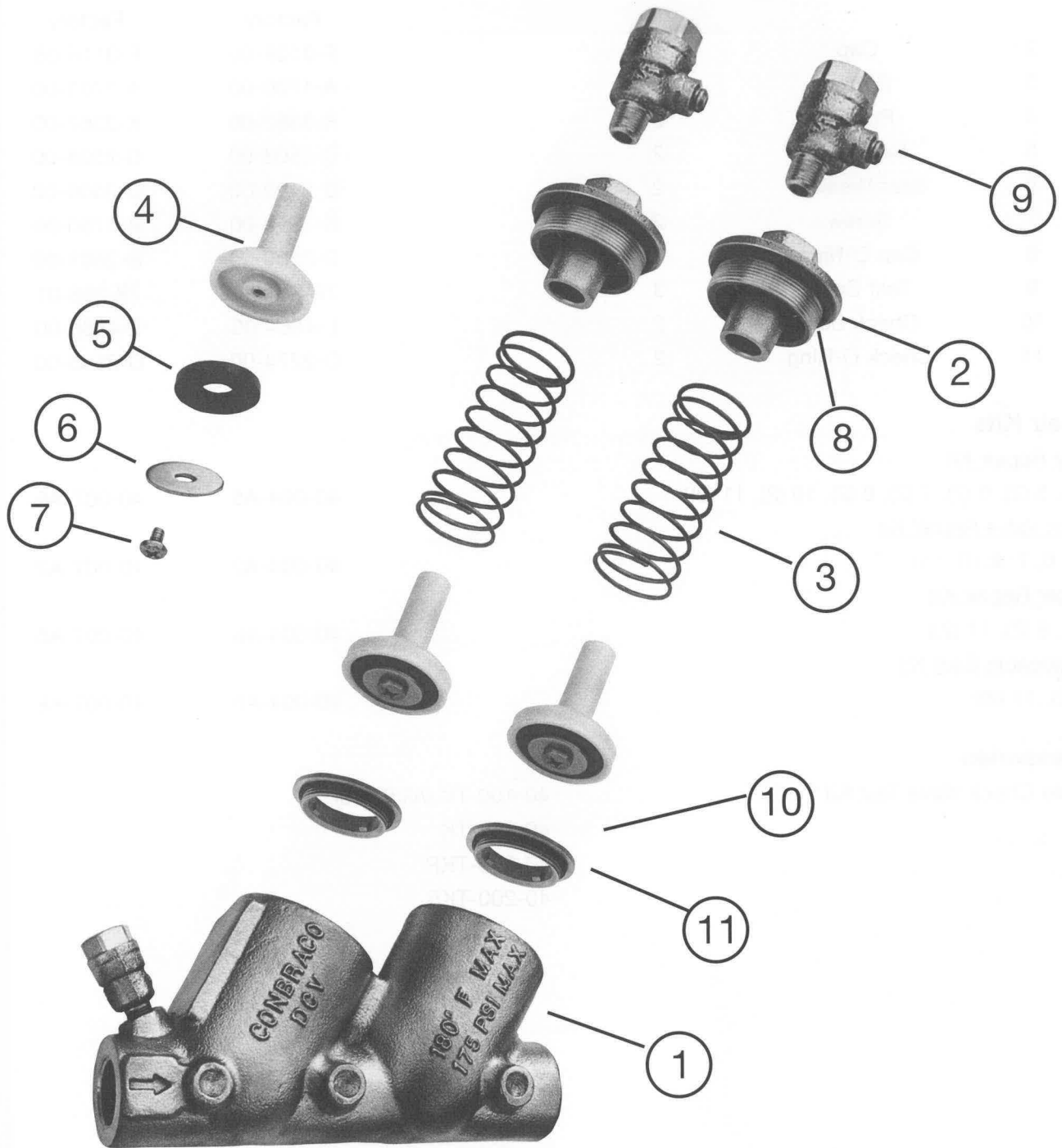


**40-100 (T)
3/4"-2"**



40-100

TOP ENTRY DOUBLE CHECK VALVE ASSEMBLY

ITEM NO.	DESCRIPTION	QUANTITY	PART NO.	
			3/4" & 1"	1-1/4", 1-1/2", 2"
1	Body	1	Consult Factory	Consult Factory
2	Cap	2	F-3108-00	F-3115-05
3	Spring	2	A-1700-00	A-1701-00
4	Poppet	2	K-3362-00	K-3367-00
5	Seat Disc	2	D-2503-00	D-2508-00
6	Seat Retainer	2	D-2499-00	D-2509-00
7	Screw	2	B-1750-00	B-1750-00
8	Cap O-Ring	2	D-2500-00	D-2501-00
9	Test Cock	3	78-257-01	78-258-01
10	Check Seat	2	L-4864-00	L-4866-00
11	Check O-Ring	2	D-2274-00	D-2565-00

Repair Kits

Major Repair Kit

(4 (2), 5 (2), 6 (2), 7 (2), 8 (2), 10 (2), 11 (2))

40-004-A5

40-007-A5

Check Valve Repair Kit

(4, 5, 6, 7, 8, 10, 11)

40-004-A2

40-007-A2

Rubber Repair Kit

(5 (2), 8 (2), 11 (2))

40-004-A6

40-007-A6

Replaceable Seat Kit

(10 (2), 11 (2))

40-004-A8

40-007-A8